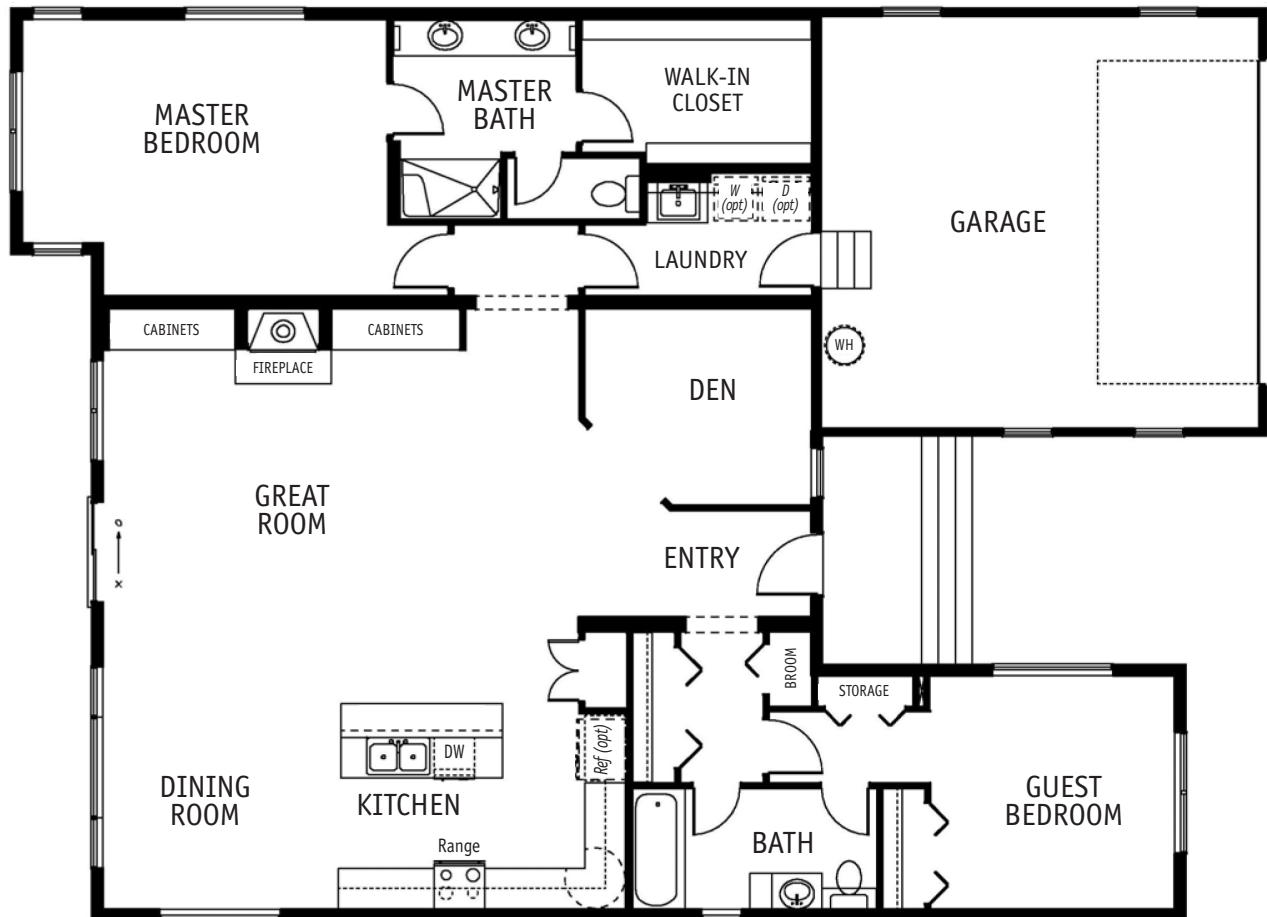


OVER 1800 SQ FT
COLLECTION

LANGLEY I

1905 SQ. FT. / 1 STORY
2 BEDROOM / 2 BATH



THE LANGLEY I is open and airy with great room that boasts a fireplace with built-in cabinetry and kitchen island. A den or home office, two car garage and covered porch are included. The master suite with walk-in closet is convenient to the utility room and the private bedroom and bath at the opposite end of the home makes this a popular design.



CALL FOR ALL OPTIONAL FEATURES AVAILABLE FOR THIS PLAN: 253.735.3435

Floorplans and/or elevations may show optional features.

TIMBERLAND
HOMES

TIMBERLAND-HOMES.COM

VISIT OUR MODEL HOME CENTER

913 CENTRAL AVENUE SOUTH • KENT, WA 98032

CUSTOM@TIMBERLAND-HOMES.COM