

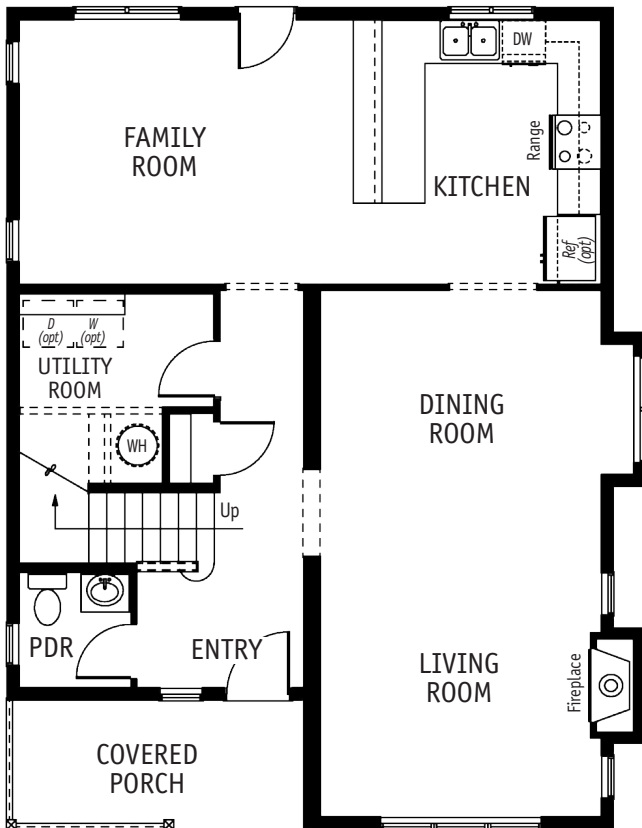


TIMBERLAND™

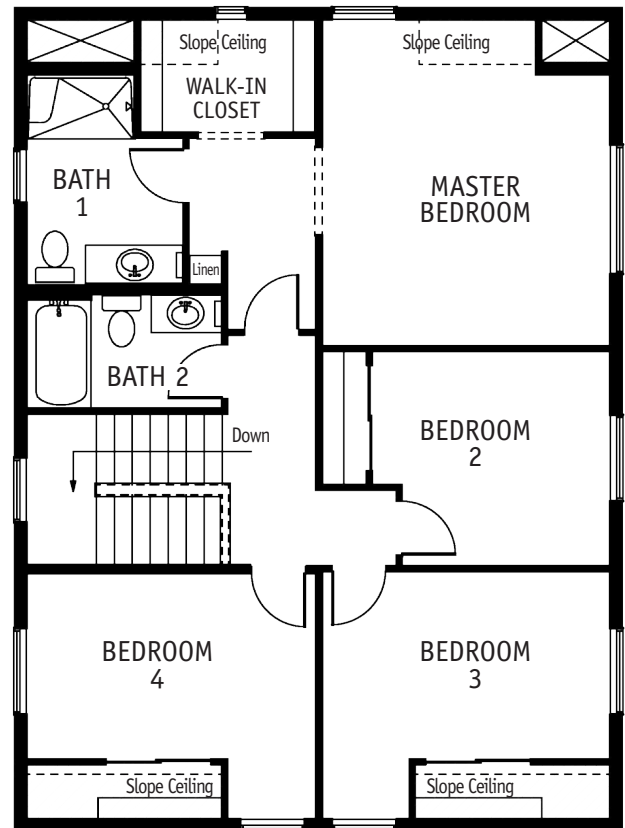
HOMES

Greenwood I

4 BR | 2.5 BA | COVERED PORCH | 1989 SQ. FT.



Main Floor



Upper Floor



GREENWOOD I—Looking for the warmth and character of a Craftsman style home? Wanting a home designed for your modern lifestyle? Timberland has created this classic home with the harmony of both. This two story, four bedroom home features a covered porch that says “welcome home” and an open floor plan that allows continuous flow from one area to the next. The family room and kitchen with eating bar make conversation especially easy and you can cozy up to the fireplace in the open concept living and dining room. The master suite includes a walk-in closet, and three other bedrooms complete the second floor. Designed with a compact footprint that will fit most properties, the Greenwood I is loaded with charming street appeal that stands the test of time.

Please contact us for more information.

See your Sales Representative for optional features available for this plan.

AUBURN, WA: 253.735.3435 | 1.800.488.5036
www.timberland-homes.com

MOUNT VERNON, WA: 360.428.1910 | 1.800.553.9107
| custom@timberland-homes.com