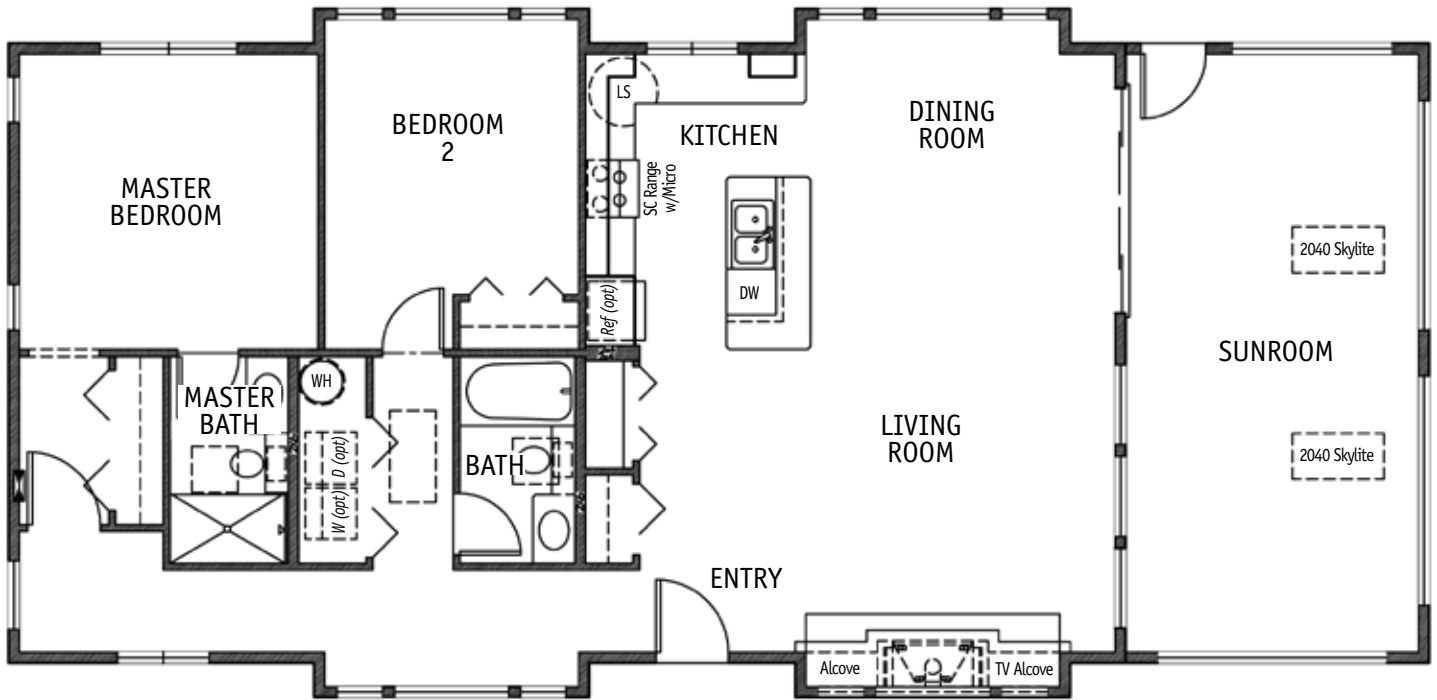




TIMBERLAND HOMES

Lopez

2 BR | 2 BA | SUNROOM | 1746 SQ. FT.



THE LOPEZ IS WARM AND HOMEY. Part of a series of beach-style homes, the great room is designed with an island feel and includes a fireplace with slate-like porcelain tile with sea pebble accent stones. The two bedroom, two bath home is spacious at 1746 sq. ft. and includes a sunroom. Bamboo flooring is featured throughout the home, and a palette of greens and beiges evoke the soft feeling of grasses found on beach dunes.

Please contact us for more information

Photos and renderings may show optional features. See your Sales Representative for the specifications on this plan.

www.timberland-homes.com | 1.800.488.5036 | custom@timberland-homes.com