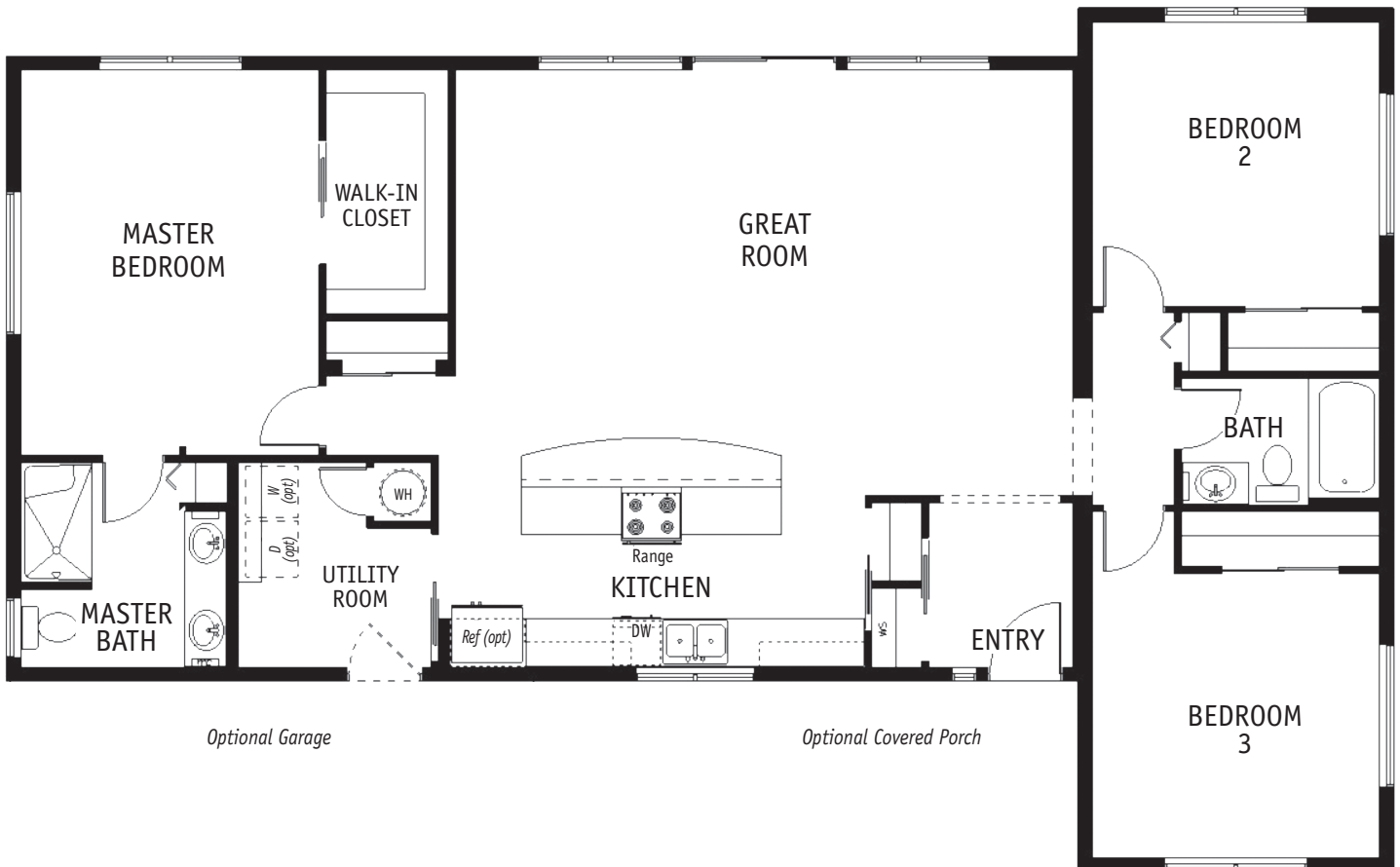


UP TO 1800 SQ FT
COLLECTION

VASHON II

1638 SQ. FT. / 1 STORY
3 BEDROOM / 2 BATH



THE VASHON II IS A FAVORITE! The private master suite and walk-in closet are at one end of the home, and the second and third bedrooms and bath are at the other. The great room is open to the kitchen with its long island and eating bar—conversation and food prep are easy. You'll capture the view from nearly every room in this light and bright home.



CALL FOR ALL OPTIONAL FEATURES AVAILABLE FOR THIS PLAN: 253.735.3435

Floorplans and/or elevations may show optional features.

TIMBERLAND
HOMES

TIMBERLAND-HOMES.COM

VISIT OUR MODEL HOME CENTER

913 CENTRAL AVENUE SOUTH • KENT, WA 98032

CUSTOM@TIMBERLAND-HOMES.COM