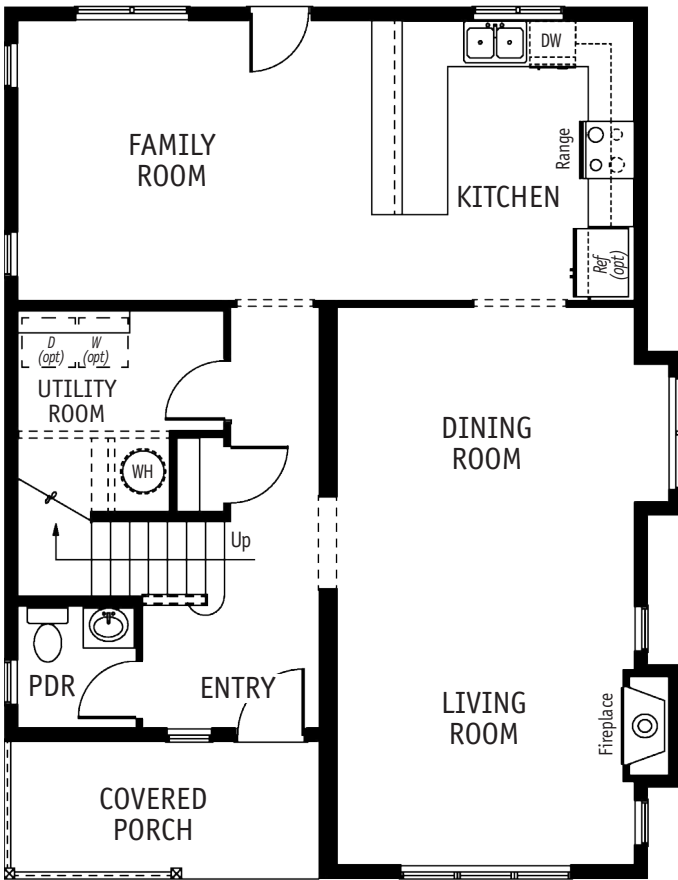


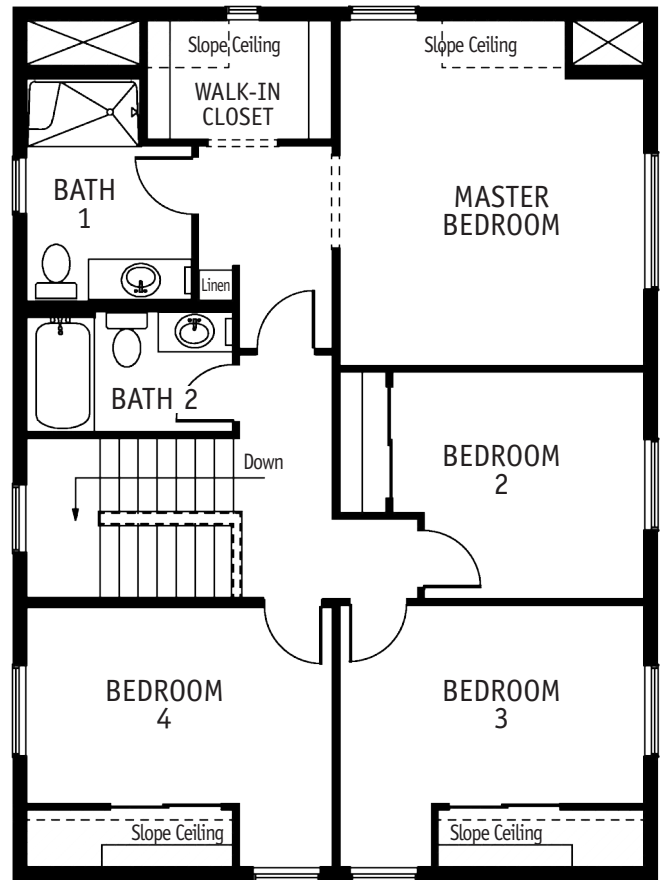
OVER 1800 SQ FT
COLLECTION

GREENWOOD I

1989 SQ. FT. / 2 STORY
4 BEDROOM / 2.5 BATH



MAIN FLOOR



UPPER FLOOR

THE MODERN GREENWOOD I HAS THE WARMTH AND CHARACTER OF A CRAFTSMAN STYLE HOME. This two story, four bedroom home features a covered porch and an open floor plan, kitchen with eating bar and cozy fireplace in the open concept living and dining room. The master suite includes a walk-in closet, and three other bedrooms complete the second floor.



CALL FOR ALL OPTIONAL FEATURES AVAILABLE FOR THIS PLAN: 253.735.3435

Floorplans and/or elevations may show optional features.

TIMBERLAND
HOMES

TIMBERLAND-HOMES.COM

VISIT OUR MODEL HOME CENTER

913 CENTRAL AVENUE SOUTH • KENT, WA 98032

1.800.488.5036 | CUSTOM@TIMBERLAND-HOMES.COM