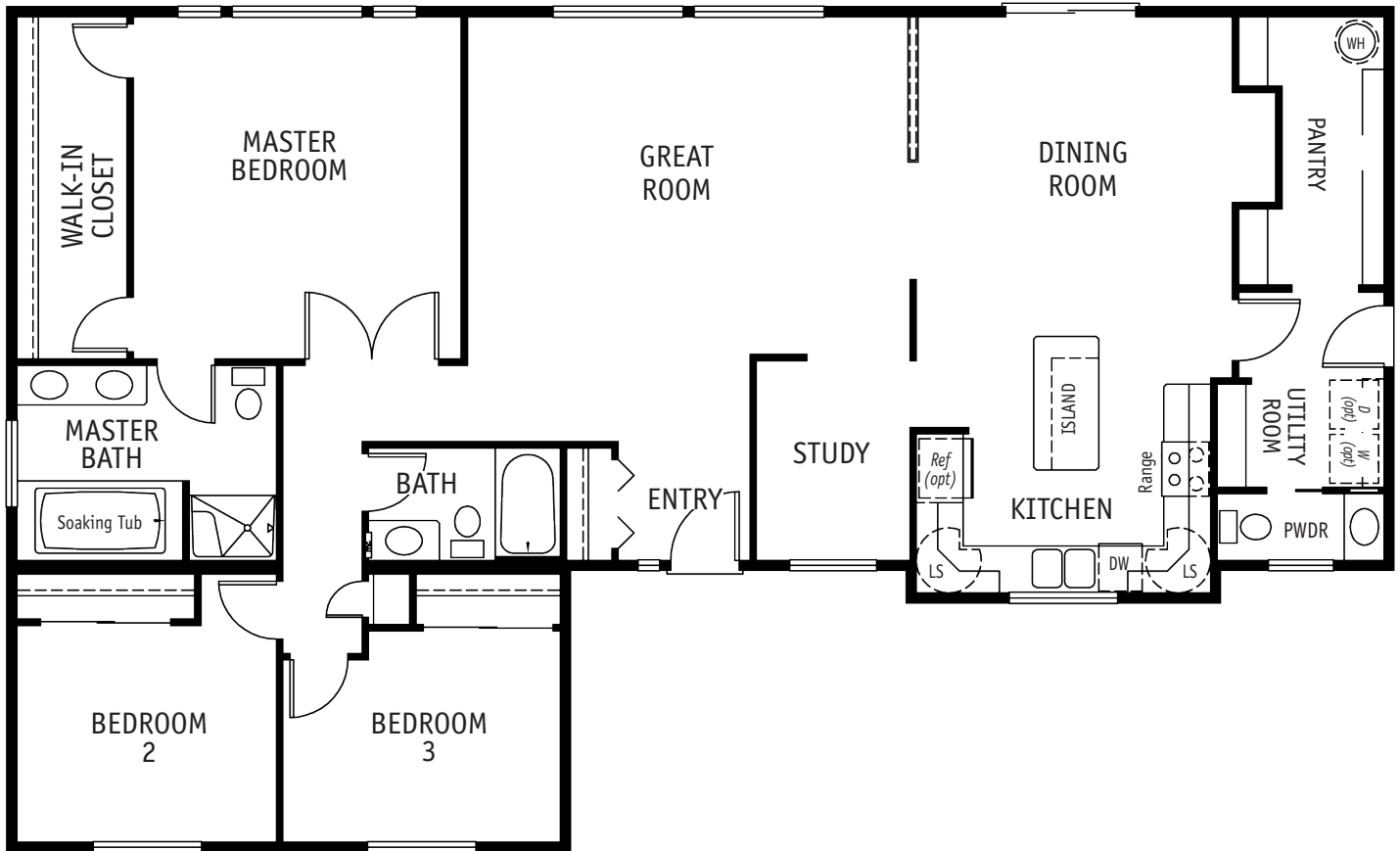


OVER 1800 SQ FT
COLLECTION

SUMMERVIEW

2024 SQ. FT. / 1 STORY
3 BEDROOM / 2 BATH



THE SUMMERVIEW IS A BEAUTIFUL HOME with master bedroom, master bath and walk-in closet, two additional bedrooms, a bath and a study. Off the open kitchen with island you will find a utility room, powder room and large walk-in pantry.



CALL FOR ALL OPTIONAL FEATURES AVAILABLE FOR THIS PLAN: 253.735.3435

Floorplans and/or elevations may show optional features.

TIMBERLAND
HOMES

TIMBERLAND-HOMES.COM

VISIT OUR MODEL HOME CENTER

913 CENTRAL AVENUE SOUTH • KENT, WA 98032
1.800.488.5036 | CUSTOM@TIMBERLAND-HOMES.COM