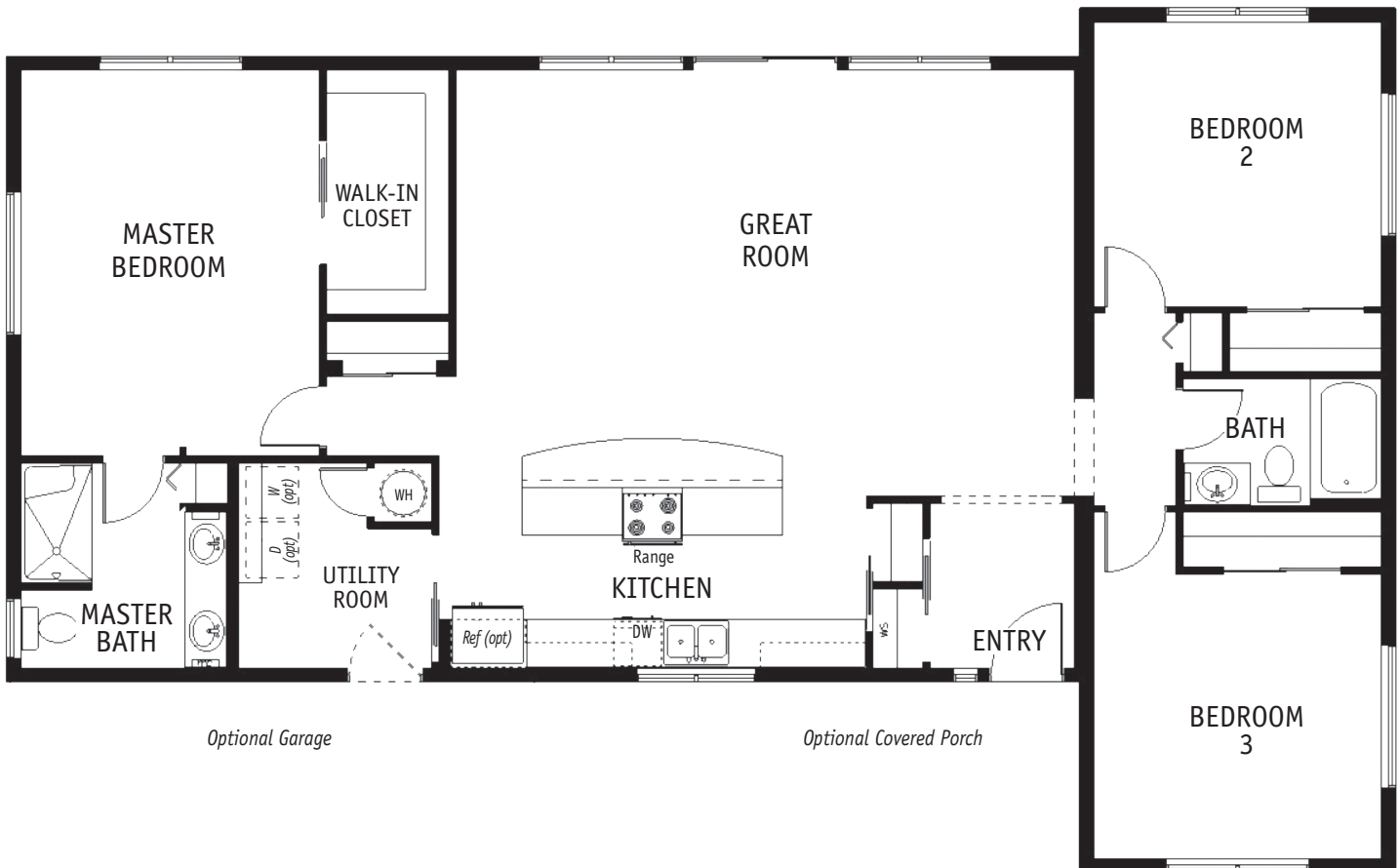


UP TO 1800 SQ FT  
COLLECTION

## VASHON II

1638 SQ. FT. / 1 STORY  
3 BEDROOM / 2 BATH



**THE VASHON II IS A FAVORITE!** The private master suite and walk-in closet are at one end of the home, and the second and third bedrooms and bath are at the other. The great room is open to the kitchen with its long island and eating bar—conversation and food prep are easy. You'll capture the view from nearly every room in this light and bright home.



**CALL FOR ALL OPTIONAL FEATURES AVAILABLE FOR THIS PLAN: 253.735.3435**

*Floorplans and/or elevations may show optional features.*

**TIMBERLAND**  
HOMES

[TIMBERLAND-HOMES.COM](http://TIMBERLAND-HOMES.COM)

**VISIT OUR MODEL HOME CENTER**

913 CENTRAL AVENUE SOUTH • KENT, WA 98032  
1.800.488.5036 | [CUSTOM@TIMBERLAND-HOMES.COM](mailto:CUSTOM@TIMBERLAND-HOMES.COM)